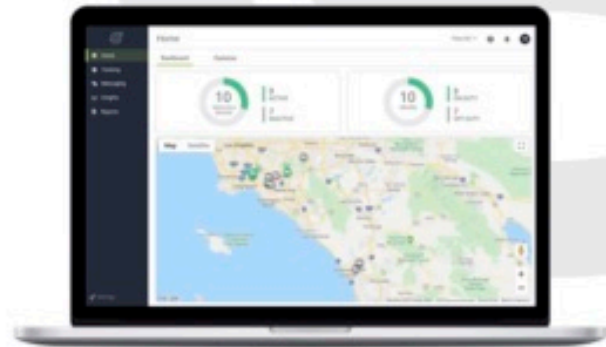


TN360

Designed to tell you what you don't know. Connect. Collect. Analyse. Predict.



TN360 is fleet management redesigned to deliver visual insights using data you can mould. Through innovative use of big data and algorithms, the system learns from your operation to tell you what you don't know through familiar means such as dashboards, alerts and maps. With real-time analytics, you can safely and efficiently manage your business as TN360 uncovers trends via natural search, drillable data, and dynamic dashboards. It integrates and collects data to find the information you need, and gives you the instant ability to make powerful decisions in real-time, through a system that is easy to use, adaptable and grows with you.



Connects Data to Learn, Identify & Predict



Instant Visualisation of Valuable Information



Adaptable Insights and Drillable Data



Intelligent Natural Search for Advanced Insights

UNIQUE FEATURES

Natural language search — Ability to ask questions by voice or text, to learn and discover in real-time.

Deep learning — Trains to improve based on your data and how you interact with the AI-based engine to give insight into what matters the most to your business.

Visual dashboards — View key business and operational metrics that deliver powerful insights.

Drillable data — Data you can control, TN360 gives you the ability to further delve into the analytics by defining further parameters.

Automation — Power of technology to digitise previously manual tasks, allowing you to uncover inefficiencies, improve productivity and reduce costs.

Drone view — Real-time satellite and terrain view that shows the current movements of your vehicles.

Tracking lenses — Up to the second tracking view to take a different view on location information based on your role, from trips and proximity to safety.

Driver technologies — Stay connected with your workforce through a range of applications delivered directly to drivers to complete their tasks with ease.

FEATURES

The TN360 platform is designed to meet the needs of fleets of all sizes, and includes several service levels to suit the specific needs of your business.

FEATURE FOCUS	TN360
TN360 WEB USER INTERFACE	
Home, Safety & Productivity Dashboards	✓
Driver Instant Messaging [†]	✓
Tracking & Location Management incl. Geofencing, HD Replay & Drone View	✓
Tracking Lenses (Trips, Safety, Proximity)	✓
Real-Time Alerts & Event Views	✓
Natural Language Search	✓
Visual Insights & Analytics	✓
Create Your Own Dashboards*	✓
Integrated Job & Dispatch Management [†]	✓
Speed & Fatigue Management (EWD) [†]	✓
Detailed Reporting (General, Compliance, Performance, Geofence & Maintenance)	✓
Engine Management (Harsh Acceleration, Braking, Cornering and Excessive Idle)	✓
Vehicle Performance Monitoring (Canbus Data)*	✓
Vehicle Maintenance	✓
Self-Managed Administration	✓
TN360 Mobile App [#]	✓
Fuel Tax Credit Management (AU)*	✓
Road User Charges Management (NZ) [^]	✓

DRIVER APPLICATIONS	TN360
Driver ID [†]	✓
Messaging [†]	✓
Pre-trip Checklist [†]	✓
Sentinel (Fatigue) [†]	✓
SmartJobs (Job Management) [†]	✓
SpeedAssist [†]	✓
Mass Manager (Mass Declaration) [†]	✓
Easydocs (Document Manager) [†]	✓
SmartNav (Navigation) [†]	✓

FEATURE FOCUS	TN360
PERIPHERAL PRODUCTS	
In-Vehicle Telematics Device (VT101)	✓
Ruggedised Driver In-Vehicle Device (MT201)	✓
Trailer Tracking (Solar Tracker)(AU)	✓
Asset Tracking (ATS1 & ATS2)	✓
Integrated Multi-Camera System	✓
Electronic Distance Recorder (EDR1 & EDR2)(NZ)	✓

INTEGRATION	TN360
Assistants (Amazon Alexa)*	✓
Automation Tools (IFTTT, Zapier)*	✓
Freight Management System (CMS F2020, JD Edwards, Oracle OTM, TickDone)*	✓
On-Board Mass Weighing Systems (e-Max, Elphinstone, Loadman, Pacific Scales, Tramanco)*	✓
Optimisation (Ortec)*	✓
ERP & Business Systems (SAP, Command Alkon)*	✓

* Optional extras

[†] Requires MT201 peripheral device

[^] Requires EDR1 / EDR2 peripheral device

[#] Available via SmartPhone

Please note:

- all TN360 web user interface features listed require VT101 peripheral device
- all driver applications require MT201 peripheral device
- all features applicable to the Australia & New Zealand region

TECHNICAL SPECIFICATIONS

GPS Tracking Solutions Designed to Provide Critical Data for Fleets of All Sizes

Built to work specifically with the TN360 AI-powered platform, the VT101 provides fleets the flexibility they need.

VT101



CAN	
CAN support	SAE J1939
CERTIFICATIONS AND RATINGS	
Certifications	North America: FCC Part 15 Class B, IC, NOM/IFETEL Europe: CE, E-Mark, REACH, WEEE, ROHS ANZ: RCM
Environmental Compliance	SAE J1455-2006
Ratings	IP4x
COMPREHENSIVE I/O	
Input / Output	3 / 3
CONNECTIVITY	
Bluetooth	BLE 5.0
Connectivity	4G Global LTE Cat M1 / NBO / GPRS
DEVICE DETAILS	
Accelerometer	3-axis MEMS
Battery	1300mAh LiPo
Record Storage (Flash Memory)	8MB
3-Axis MEMS Gyroscope	Yes
Antenna	Internal cellular and GNSS
LEDs	1
Size	Height .98"/25 mm Width 4.96"/126 mm Depth 2.55"/65 mm
Tracking	Second by second data
Weight	5.3 ounces / 150 g
Supply Voltage	6VDC – 48VDC
Current Consumption (Sleep Mode)	<3mA@12VDC
Current Consumption (Nominal)	50mA@12VDC
ENVIRONMENTAL	
Battery Operating Temp	-20 to 60°C / -4 to 140°F
FIRMWARE UPDATES	Over-the-air (OTA)
GPS	GLONASS/GALILEO/BEIDOU/Navstar GPS
INSTALLATION	Professional 3-wire install Professional install with Automotive Adaptor Cable Self-install with Automotive Adaptor Cable*
MOBILE APPLICATION	Suite of TN360 apps
OBDII PROTOCOLS SUPPORTED	IOS 15765-4, J1708 and ISO-9141*
SUPPORTS PLATFORM	TN360

* Coming Soon

1300 667 088

paul@ntsaust.com.au

www.nationwidetrackingsystems.com.au